

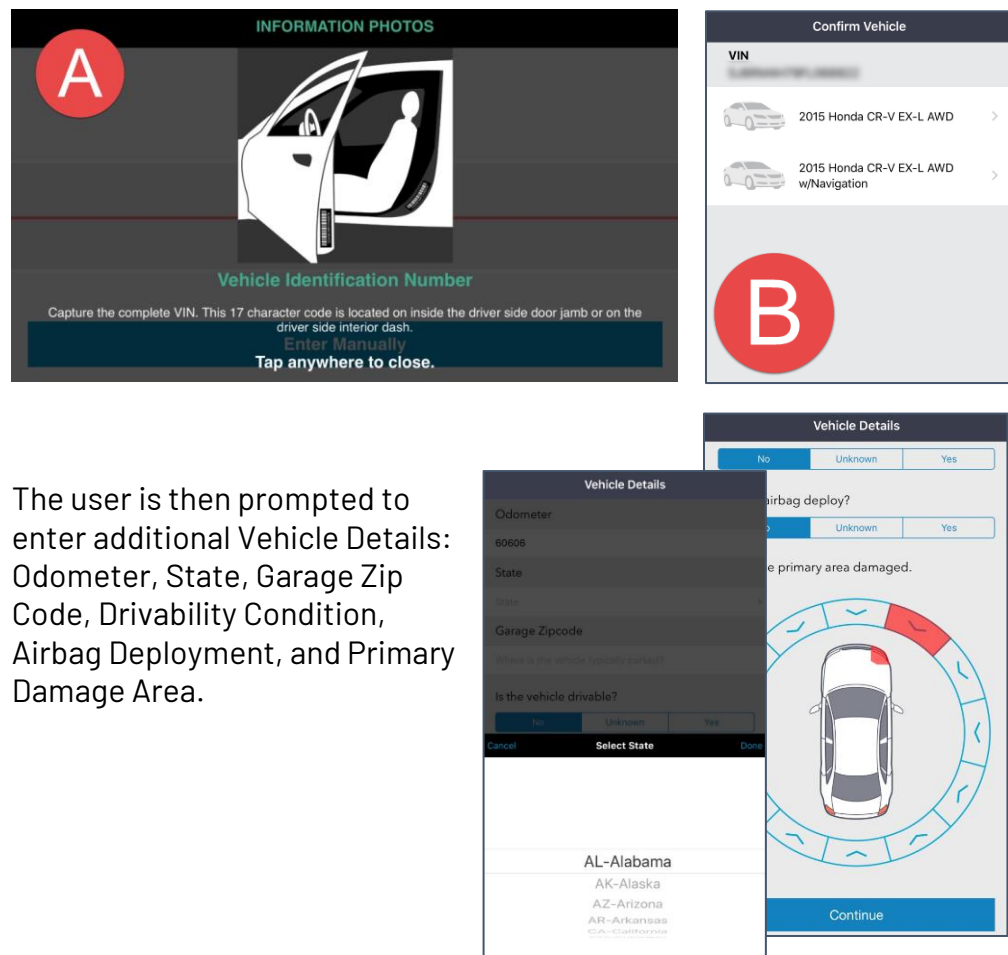
CCC Smart™ Claims – Smart Total Loss SDK

Overview

The Smart Total Loss SDK is one component of the CCC Smart™ Claims service, which, through an analysis of metadata and a single vehicle photo, helps Appraisers/Adjusters determine if a damaged vehicle is a total loss. **Note:** The images in this document are from a demo app; actual UI will vary.

Workflow

To receive their assessment, an Appraiser/Adjuster uses their mobile device to (a) scan the vehicle's VIN (however, if necessary, the VIN can be entered manually) and then (b) confirms the vehicle by tapping on the correct option on the Confirm Vehicle screen.



The user is then prompted to enter additional Vehicle Details: Odometer, State, Garage Zip Code, Drivability Condition, Airbag Deployment, and Primary Damage Area.

Continued on next page

CCC Smart™ Claims – Smart Total Loss SDK, Continued

Workflow, continued

Next, the user is directed to position themselves to capture a photo of the whole vehicle and the entire damaged area.

Holding their device in landscape mode, the user captures the damage photo.

On the Summary screen, the user taps the Submit button and a popup appears that contains the total loss prediction: Repairable or Total Loss (Unknown and Invalid are also possible results).

