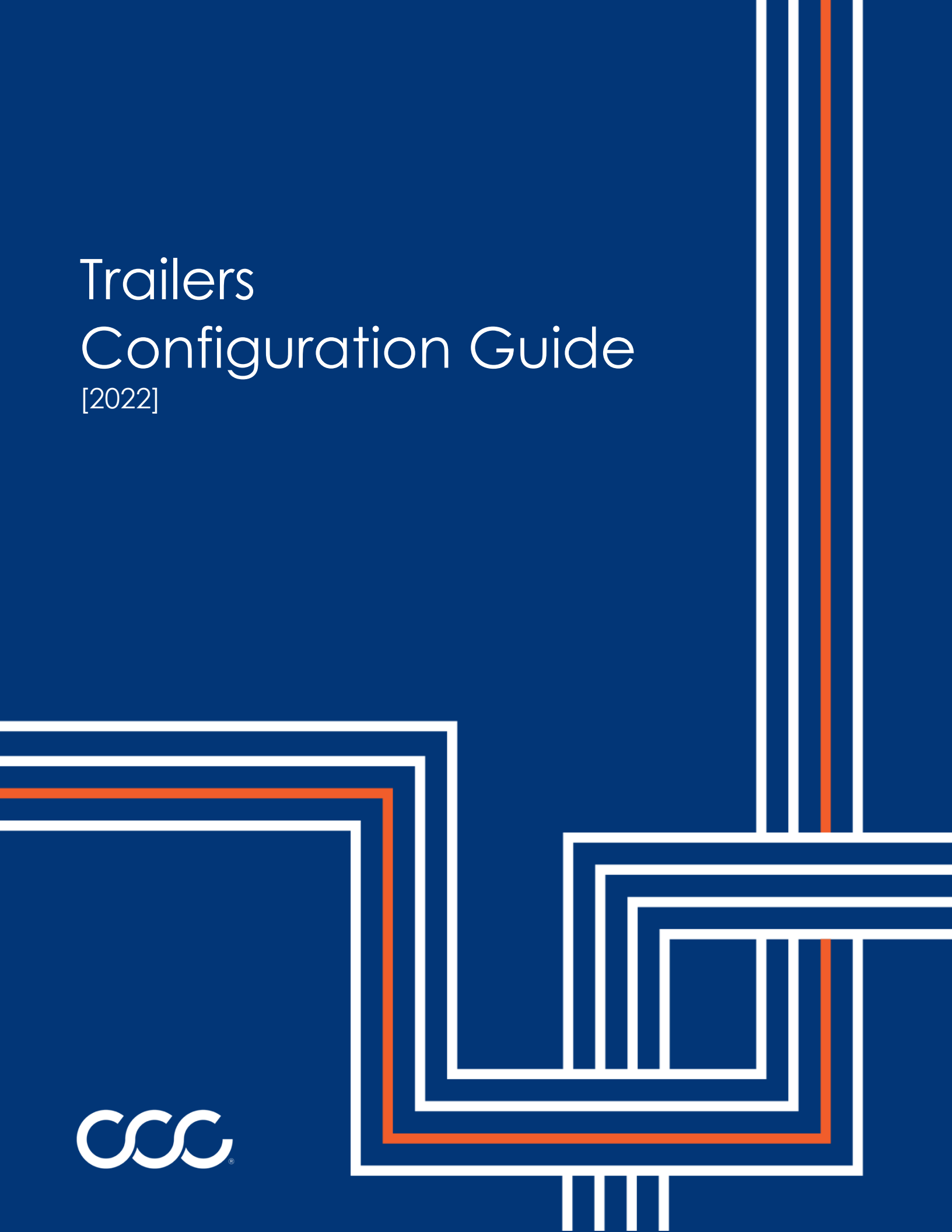


# Trailers Configuration Guide

[2022]



## The Essential Questions

### Information requested on Trailers

- What is the year, make and model of the trailer?
- What type of trailer is it (cargo, flat bed, horse, dump, etc.)?
  - If trailer type is unknown, what was the trailer used for?
- Is it a bumper pull or gooseneck hitch?
- What is the length of the trailer?
- How many axles does the trailer have?
- What is the axle capacity?
- Wheel type – Steel, Aluminum or Chrome?

## Trailers

### **Common things to look for:**

Please provide CCC the year, length, width, type of material used for construction, and axle capacity on all trailer valuations. It is helpful for CCC also to have the make, model, VIN, place of purchase and purchase price.

### **Trailer VIN Information**

When breaking down a VIN on a trailer, there are typically a few digits within the VIN that will provide dimensions for the configuration of the trailer. Most commonly, trailer VINs will decode the length and the number of axles on the trailer within the 6<sup>th</sup> – 8<sup>th</sup> digits of a 17-digit VIN. When trailer VINs follow this standard VIN format, the 6<sup>th</sup> and 7<sup>th</sup> digits will provide the length of the trailer, the 8<sup>th</sup> digit reveals the number of axles and the 10<sup>th</sup> digit will state the year of the loss.

Example: 1R9SU1626DV252075

This VIN is decoding that this trailer has a length of 16' and two axles.

**Common manufacturers who follow this VIN pattern:** Interstate, Haulmark, Big Tex, Diamond Cargo, Trail Boss, Featherlite, Homesteader, Mirage, Pace American, Stealth, Carry On.

Please note:

- The full configuration guide should be reviewed for additional items that may enhance the overall value of the loss.
- Configuration changes to existing valuations may result in a new valuation.

## Commercial Trailers

### Aluminum and Stainless-Steel Tanks

#### **Aluminum and Stainless-Steel Tank Values:**

- Number of compartments?
- What is the gallon capacity?
  - If dry bulk, capacity can be provided in cubic feet.
- What commodity is carried?
- Are the compartments heated?
- Is the trailer insulated?
- Does it have a vapor/recovery skull system?
- Is there a pump?
- Wheel type – Steel, Aluminum or Chrome?



### Steel Tank

#### **Steel Tank Values:**

- Number of compartments?
- What is the gallon capacity?
  - If dry bulk, capacity can be provided in cubic feet.
- What commodity is carried?
- Are the compartments heated?
- Is the trailer insulated?
  - Is there extra insulation?
- Does it have a vapor/recovery skull system?
- Is there a pump?
- Are there external rings?
- Is there a rubber liner?
- Wheel type – Steel, Aluminum or Chrome?
- Suspension type – Air or Spring?

### Suspension

Air Ride Suspension



Spring Suspension



## Dry/Van & Reefer (Refrigerated Trailer)

### Dry Van/Reefer Values:

- Is there a side door?
  - Is it a single or double side door?
- Are the sidewalls fiberglass?
- Are the front and rear stainless steel?
- Is there a lift-gate?
- What is the lift-gate capacity?
- Reefer Unit:
  - What is the year/make/model of the reefer unit?
  - How many hours has the unit been used?
- Aluminum is the "standard" floor type for reefer units.
- Suspension type - Air or Spring?

Dry/Van Trailer



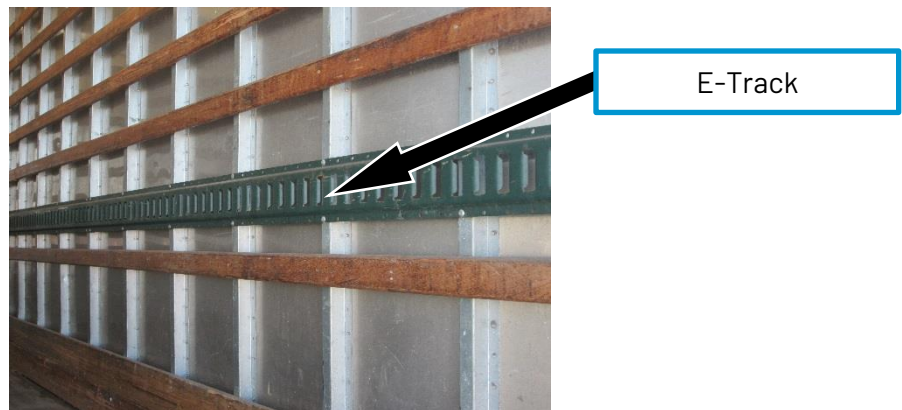
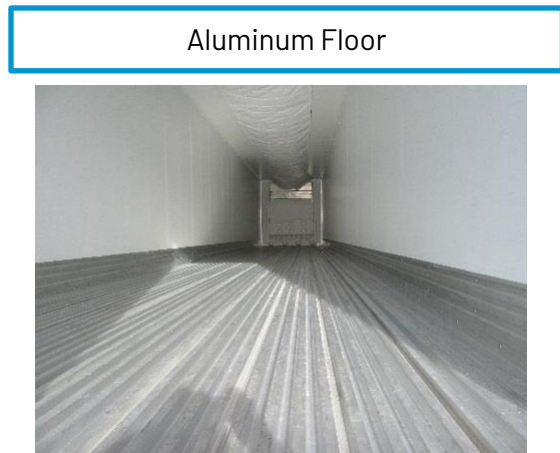
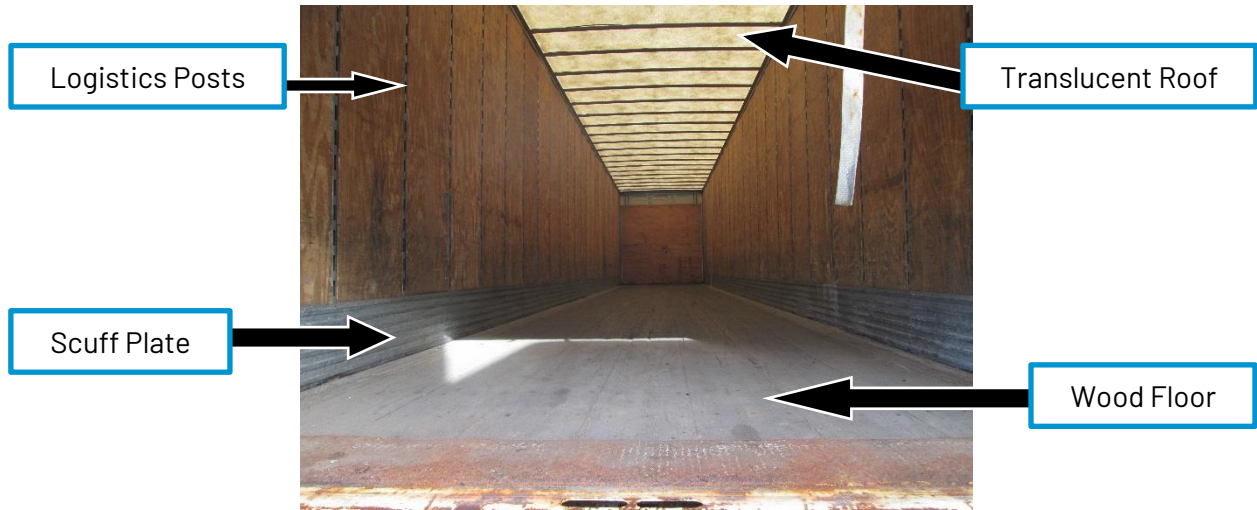
Reefer (Refrigerated) Trailer



## Rear Doors



## Floor and other equipment



## Dump Trailer

### Dump Trailer Values:

- Suspension type – Air or Spring?
- Does it have a two-way gate?
- Does it have a frame?
- What type of dump – end, side, belly or half-round dump?
- What is the construction of the dump?
- How tall are the sides? 48" is typical size; 60" may be considered an upgrade, depending on the loss.
- Does it have a rear air gate?
  - Is there a tarp?
- Is the tarp electric or manual?
- Is the body heated?
- Are there coal/sand doors? How many?
- Is it a vibratory bed?
- Does it have a watertight liner?
- Is there a tag or push axle?
- Wheel type – Steel, Aluminum or Chrome?

Side Dump



Belly Dump



Coal/Sand Door

## Flat Bed

### Flat Bed Values:

- Suspension Type: Air or Spring?
- What is the width, 96" or 102"?
  - Typical s 96"
- Exterior Construction
  - Steel
  - Aluminum
  - Combination of Both
- Is there a headboard?
- Is it a curtain-side trailer?
- Does it have a sliding axle?
- Does it have toolbox(s)?
- Wheel Type- Steel, Aluminum or Chrome?



## Drop Deck



## Ratchets and Straps



## Grain Trailers

### Grain Trailer Values:

- Suspension Type: Air or Spring?
- What is the width, 96" or 102"?
  - Typical width is 96"
- Does it have a Manual or Electric tarp?
- Is it a welded construction?
- How many hoppers does it contain?
- Does it have a tag or push axle?



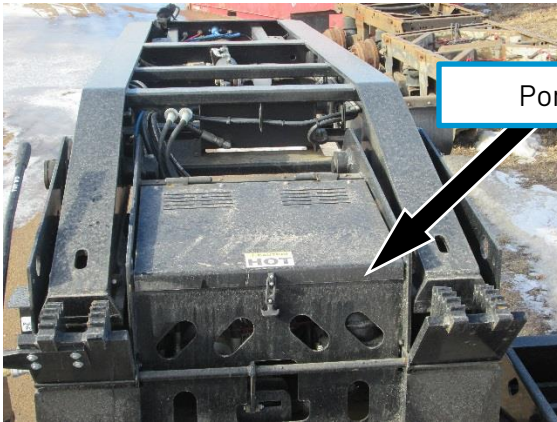
## Lowboy

### Lowboy Trailer Values:

- Suspension Type: Air or Spring?
- Is it a fixed or removable gooseneck?
- Does it have a gooseneck jeep?
- Is the deck portion steel?
- Does it have a spreader beam?
- Is it a drop side?
- How many tons can it haul?
- Does it have a tag or push axle?
  - How many sets?
- Does it have a Pony Motor?



## Pony Motor



Pony Motor



## Commercial Stock Trailer

### Commercial Stock Trailer Values:

- Year, Make, Model
- Length and width of trailer
- What is the composition? (Steel or Aluminum)
- What type of rear door does it have?
- Side door(s)?
- Suspension Type: Air or Spring?
- One or two levels?
- Wheel Type- Steel, Aluminum or Chrome?



## Landscape

### Landscape Trailer Values:

- Is there a spare tire and carrier?
- Does it have stone guard (slush guard)?
- Does it have a winch?
- Is there a toolbox or steel mesh cage on front/back?
- Does it have a dovetail?
- Are there fenders?
- Does it have a gate on rear?
- Is it a gooseneck?
- Is there a jack?
- Is there a ladder, luggage rack or pipe rail?
- What is the height of the sides?
- Are the sides steel mesh or solid steel?
- Does it have a solid steel floor?
- Are there any D-rings? If yes, how many?
- Does it have brakes? If yes, how many axles have brakes?

## Personal Trailers

### Cargo

### Cargo Trailer Values:

- What is the axle rating/capacity?
- Does it have brakes? If yes, how many axles have brakes?
- Does it have a side door?
  - If yes, how wide?
- Is there air conditioning?
- Does it have any lighting and electrical outlets?
- Does it have a dovetail?
- Is there a luggage or ladder racks?
- Is the rear door swing, ramp style or roll up?
- Are there shelves in the interior? What is the length of shelving?
- Are there cabinets in the interior? What kind of cabinets?
- Does it have motorcycle wheel chocks? If yes, how many?
- Does it contain a spare tire with a carrier?
- Is there a toolbox?
- Are there any windows? If yes, what are their dimensions?
- Is the trailer insulated?
- Does it have a walk on or translucent roof?
- Are there any vents? Side vents or roof vents?
- Does it have a smooth exterior?
- Does it have a ramp door?
- Does it have a v-nose? If yes, what is the depth? (30" or 60")

Is there a V-Nose?



Stone Guard



**Slant Nose**

Different in appearance than a V-nose front; the front of a slant load trailer will slant upward from the bottom to the top of the trailer. At times, a slant and V-nose style front may be combined. The slant portion will only be the top few feet of the front wall on those trailers.

D-rings



Aluminum floor



**Examples of cargo trailer flooring:**

- Rubber/metal tread plate
- Vinyl
- Wood

## Small Dump

### Small Dump Trailer Values:

- Does it have ramps?
- Is there a spare tire and carrier?
- Does it have a stone guard?
- Does it have a treadplate floor?
- Does it have a winch?
- Is there a toolbox?
- Is it a gooseneck?
- Does it have a tarp?
- Does it have brakes? If yes, how many axles have brakes?
- Are there any D-rings? If yes, how many?
- Does it have Torsion Suspension?



## Flat bed/Utility

### Flat Bed or Utility Trailer Values:

- What is the axle rating/capacity?
- Is there a spare tire and carrier?
- Does it have a stone guard?
- Does it have a winch?
- Is there a toolbox?
- Are there fenders?
- Is there a jack?
- Is there a ladder or luggage rack?
- Does it have motorcycle wheel chocks? If yes, how many?
- Does it have steel mesh sides?
- Does it have wood sides?
- Does it have a solid steel, steel mesh or wood floor?
- Are there any D-rings? If yes, how many?
- Does it have brakes? If yes, how many axles have brakes?
- Wheel Type- Steel, Aluminum or Chrome?
- Does it have Torsion Suspension?

Utility bed



Flat bed



Dovetail (size requested)



Gooseneck



Tandem Axel



Pipe Rail



Tilt trailer



Rear Ramp Gate



## Horse Trailers

### Horse Trailer Values:

- Are the wheels steel or aluminum/alloy?
- Does it have a hay rack or hay pod?
- Does it have an awning? If yes, how long is it?
- Does it have a drop-down gate in the gooseneck?
- Does it have electric jacks?
- Does it have a front stall escape door?
- Does it have a rear ramp door?
- Is there a roof mounted air conditioning unit?
- Are there any roof vents with fans?
- Are there power roof vents?
- Is there a spare tire with carrier?
- Does it have full living quarters? If so, what is the length of short wall?
- How many horses does it hold? (one window per horse)
- Does it have torsion or hydraulic suspension?
- Does it have full living quarters with kitchen and bath or a weekender-style living quarters?
  - Microwave
  - Refrigerator
  - Water Heater
  - Furnace
  - Inverter (including size, if available)
  - DVD/Surround sound
  - Skylight
  - TV (including number of TV's and sizes)
  - Stereo (what components)
  - Camper Door
  - Generator (including size, if available)
  - Slide Outs
  - Air Conditioning (ducted or non-ducted)
  - Electric Jack

A Weekender Package can include similar options to full living quarters; however, it will not be complete living quarters, including a bathroom, bedroom, fridge, and/or microwave.

Bridle Hooks



Saddle Racks (1 is considered standard)



Hay Rack



Head Dividers



Slant Load



Tack Room(s)



## Livestock/Combo Trailer

A livestock trailer doesn't have windows for the horse's head like a horse trailer does.

A stock combo trailer is a combination of a livestock and horse trailer, with windows on one side and slats on the other.



## Boat

### Boat Trailer Values:

- What length of boat does the trailer carry?
- Does it have chrome fenders?
- Are there diamond plate steps?
- Does it have an electric winch? If yes, what is the capacity?
- Does it have fiberglass fenders?
- Does it have a sailboat package?
- Is there a spare tire with carrier?
- Does it have brakes? If yes, how many axles have brakes?
- Is it a detachable tongue?
- Does it have rollers?

## Ice Fishing Travel Trailers

Mobile ice fishing trailers typically lower to the ice and have holes internally to cut through the ice and provide a lot of creature comforts while fishing. They are limited in many standard camping features, but typically have a heater.

Please indicate the number of fishing holes there are, a kitchen or bathroom and what type of leveling system there is for an Ice Fishing Trailer.

## Snowmobile Trailer

Double Place Open Trailer



Slush Guard



### Snowmobile Trailer Values:

- What is the VIN of the trailer, if available?
- How many snowmobiles does it carry?
- What is the year, make and model of the trailer?
- What is the length of the trailer?
- What is the width of the trailer?
- How many axles does it have?
- What is the axle capacity?
- What is the construction of the trailer?
- Does it have a slush guard?
- Does it have torsion suspension?

### Enclosed Snowmobile Trailer Values:

- What is the VIN of the trailer, if available?
- How many snowmobiles does it carry?
- What is the year, make and model of the trailer?
- What is the length of the trailer?
- What is the width of the trailer?
- How many axles does it have?
- What is the axle capacity?
- Does it have Vinyl interior?
- What is the construction of the trailer?
- Is it a V-Nose?
- Does it have a slush guard?
- Are there any cabinets and/or vents?
- Does it have torsion suspension?