



## CCC® - Valuation Dashboard

---

### Overview

The Valuation Dashboard job aid contains the following sections. Select a section below to link directly to that section.

Section	Page
<a href="#">Overview</a>	2
<a href="#">Valuation and Cycle Time</a>	6
<a href="#">Post Val Cnt and Post Val \$</a>	8
<a href="#">Map</a>	10

---

*Continued on next page*

## Valuation Dashboard - Overview, Continued

### Overview

The **Valuation Dashboard** gives an overview of Valuation data for your Company and Industry. This data, updated weekly, provides a visual representation of how your programs and staff are working with the Valuation process and impacting the cost of Valuations for your company. Use this data to compare your company against the industry as a whole using the dashboard graphs, percentages, and dollar figures.

**Note:** Refer to the glossary for details regarding metrics and terms for this dashboard.

### Navigate to Valuation Dashboard

Follow these instructions to navigate to the **Valuation Dashboard**:

Step	Action
1	Login to the <b>CCC ONE®</b> portal.
2	Click <b>CCC Insurance Visual Insights</b> from the portal homepage. <div data-bbox="540 877 1414 1178" style="border: 1px solid gray; padding: 5px; margin-top: 10px;"> <p>The screenshot shows the CCC ONE portal homepage with several dashboard options: CCC ONE Analytics, CCC ONE Claim Insight, CCC ONE Parts Intelligence, CCC ONE Predictive Solutions, and CCC ONE Custom Dashboards. The 'CCC Insurance Visual Insights' option is highlighted with a red box.</p> </div>
3	Click the <b>Valuation Dashboard</b> . The Valuation Dashboard opens. <div data-bbox="540 1255 1414 1627" style="border: 1px solid gray; padding: 5px; margin-top: 10px;"> <p>The screenshot shows the 'Standard Reports' page in the CCC Insurance Visual Insights portal. It features a 'Create' button, a navigation sidebar with 'My Reports', 'My Objects', 'History List', and 'My Subscriptions', and three dashboard cards: 'Claim Estimating Dashboard', 'Parts Dashboard', and 'Valuation Dashboard'. The 'Valuation Dashboard' card is highlighted with a red box.</p> </div>

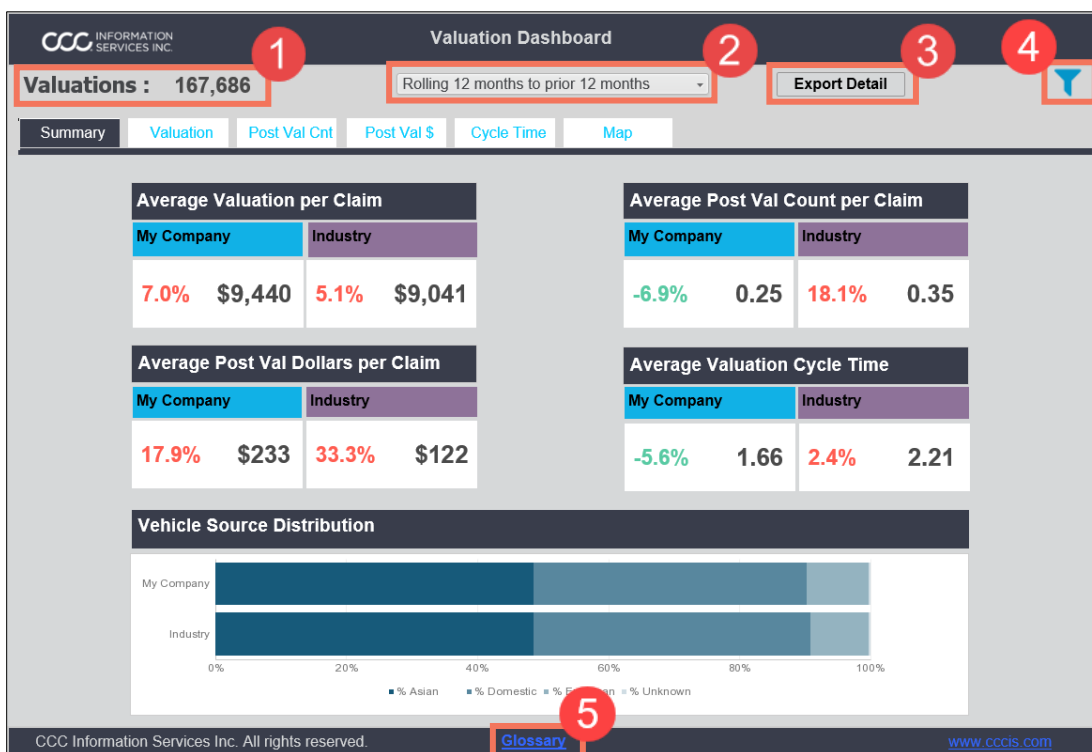
*Continued on next page*

# Valuation Dashboard - Overview, Continued

## Dashboard Navigation

Use the following to navigate the Valuation Dashboard:

Part	Function
1	Number of Valuations shown in the dashboard for the selected timeframe and filters.
2	Configure Dashboard to display data in the following timeframes: <ul style="list-style-type: none"> <li>Completed month to prior month</li> <li>Current YTD to prior YTD</li> <li>Recent QTR to prior year QTR</li> <li>Rolling 12 months to prior 12 months</li> <li>Rolling 6 months to prior 6 months</li> </ul>
3	Select Export Detail to view dashboard export details.
4	Filter Dashboard to display data in the following categories (click the filter icon): <ul style="list-style-type: none"> <li>Loss Category</li> <li>Vehicle Body Category</li> <li>Valn Vehicle Type</li> <li>Vehicle Age Group</li> <li>Vehicle Source</li> <li>Vehicle Owner State</li> </ul>
5	Select to link to the Glossary.



Continued on next page

## Valuation Dashboard - Overview, Continued

### Navigation, continued

Use the filter icon to select the types of data to display in the dashboard.



Part	Description
<b>Loss Category</b>	Select the type of loss. <i>(ex: Comprehensive)</i>
<b>Vehicle Age Group</b>	Select a category for the age of the vehicle. <i>(ex: 1-3 Years Old)</i>
<b>Vehicle Body Category</b>	Select the body type of the vehicle <i>(ex: Car)</i>
<b>Vehicle Source</b>	Select where the vehicle was manufactured. <i>(ex: European)</i>
<b>Valn Vehicle Type</b>	Select the vehicle category. <i>(ex: Luxury/sports car)</i>
<b>Vehicle Owner State</b>	Select the state where the vehicle is registered. <i>(ex: Illinois)</i>



Select **Unset** to revert the filters to the last settings where the apply button was used. To apply changes made in the filter select the **Apply** button.

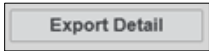
*Continued on next page*



# Valuation Dashboard - Overview

**Navigation,**  
continued

Use the **Export Detail** button to open the Valuation report in a new tab/ window. This report will show a detailed view of your data with the filters selected remaining intact; however, you can change the filters as desired without effecting the dashboard. Data can also be exported to a PDF, Excel®, or CSV.



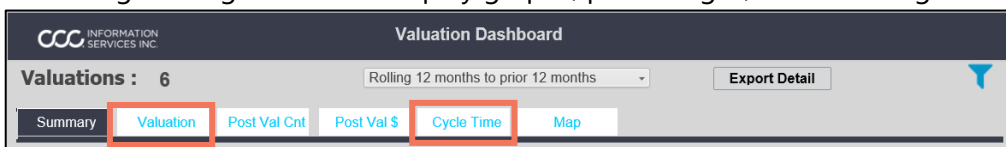
FILTER	Valuation Detail Data																	
Valuation Detail	Loss Category	Vehicle Source	Vehicle Body Category	Value Vehicle Type	Vehicle Age Group	Time Period	Period	Vehicle Owner State	Current PostVal Credit	Current PostVal Mileage Adj	Current Adjusted Value Amt	Current Base Value Amt	Current Condition Adj. Amt	Current Condition Rating Num	Current Deductible Amt	Current PostVal Amt	Current PostVal Credit	Current PostVal Condition Amt
Total									26,882	\$36,338	\$3,119,225,819	\$3,124,130,681	\$5,042,866	425,832.49	-\$40,518,771	\$474,212	143,770	\$2,866,364
Collision	Collision	Asian	Car	Economy/compact car	1 - 3 Years Old	Rolling 12 months to prior 12 months	Rolling 12 months to prior 12 months	Alabama	3	-\$60	\$918,581	\$911,304	\$2,765	88.26	-\$16,900	-\$2,251	30	\$889
								Alaska	8	\$0	\$14,235	\$14,235	\$0	1.00	\$0	\$0	0	\$0
								Arizona	17	-\$3,917	\$2,020,964	\$2,000,157	\$19,719	176.84	-\$7,800	-\$4,955	41	\$210
								Arkansas	5	\$0	\$10,000	\$10,000	\$0	0.00	\$0	\$0	0	\$0
								California	88	-\$80,107	\$8,000,000	\$8,000,000	-\$80,107	1,000.00	-\$80,107	-\$80,107	88	\$8,000
								Colorado	5	\$0	\$80,000	\$80,000	\$0	0.00	\$0	\$0	0	\$0
								Connecticut	3	\$0	\$80,000	\$80,000	\$0	0.00	\$0	\$0	0	\$0
								Delaware	3	\$0	\$80,000	\$80,000	\$0	0.00	\$0	\$0	0	\$0
								District of Columbia	3	\$0	\$80,000	\$80,000	\$0	0.00	\$0	\$0	0	\$0
								Florida	3	\$0	\$80,000	\$80,000	\$0	0.00	\$0	\$0	0	\$0
								Georgia	3	\$0	\$80,000	\$80,000	\$0	0.00	\$0	\$0	0	\$0
								Hawaii	3	\$0	\$80,000	\$80,000	\$0	0.00	\$0	\$0	0	\$0
								Idaho	3	\$0	\$80,000	\$80,000	\$0	0.00	\$0	\$0	0	\$0
								Illinois	3	\$0	\$80,000	\$80,000	\$0	0.00	\$0	\$0	0	\$0
								Indiana	3	\$0	\$80,000	\$80,000	\$0	0.00	\$0	\$0	0	\$0
								Iowa	3	\$0	\$80,000	\$80,000	\$0	0.00	\$0	\$0	0	\$0
								Kansas	3	\$0	\$80,000	\$80,000	\$0	0.00	\$0	\$0	0	\$0
								Kentucky	3	\$0	\$80,000	\$80,000	\$0	0.00	\$0	\$0	0	\$0
								Louisiana	3	\$0	\$80,000	\$80,000	\$0	0.00	\$0	\$0	0	\$0
								Maine	3	\$0	\$80,000	\$80,000	\$0	0.00	\$0	\$0	0	\$0
								Maryland	3	\$0	\$80,000	\$80,000	\$0	0.00	\$0	\$0	0	\$0
								Massachusetts	3	\$0	\$80,000	\$80,000	\$0	0.00	\$0	\$0	0	\$0
								Michigan	3	\$0	\$80,000	\$80,000	\$0	0.00	\$0	\$0	0	\$0
								Minnesota	3	\$0	\$80,000	\$80,000	\$0	0.00	\$0	\$0	0	\$0
								Mississippi	3	\$0	\$80,000	\$80,000	\$0	0.00	\$0	\$0	0	\$0
								Missouri	3	\$0	\$80,000	\$80,000	\$0	0.00	\$0	\$0	0	\$0
								Montana	3	\$0	\$80,000	\$80,000	\$0	0.00	\$0	\$0	0	\$0
								Nebraska	3	\$0	\$80,000	\$80,000	\$0	0.00	\$0	\$0	0	\$0
								Nevada	3	\$0	\$80,000	\$80,000	\$0	0.00	\$0	\$0	0	\$0
								Nevada	3	\$0	\$80,000	\$80,000	\$0	0.00	\$0	\$0	0	\$0
								Nevada	3	\$0	\$80,000	\$80,000	\$0	0.00	\$0	\$0	0	\$0

**Note:** The data show is summary data and not claim detail data.

## Valuation Dashboard - Valuation and Cycle Time Tabs, Continued

### Overview

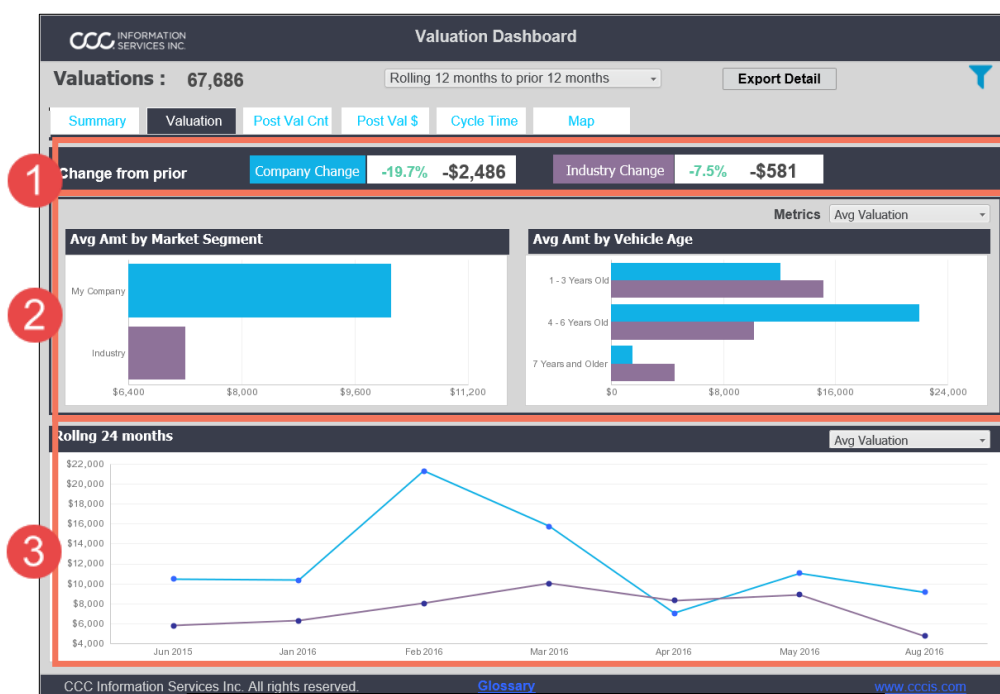
The Valuation Dashboard contains tabs displaying various Valuation Company and Industry metrics. Interact with data through the filters and date range configurations to display graphs, percentages, and dollar figures.



### Valuation Tab

The **Valuation** tab shows high level data for the following information:

Part	Description
1	Average dollar and percentage change from prior for My Company and Industry data.
2	Bar graphs show the Average Amount Per Valuation for the Market Segment and Vehicle Age. The Market Segment can also be filtered by Avg Valuation and Avg Final Valuation data.
3	A line graph shows the Average rolling 24 months for the Company and Industry data, which can be configured by Avg Valuation and Avg Final Valuation.



**Hint:** Hover the mouse over the bar graph items to learn more about how the values are allocated.

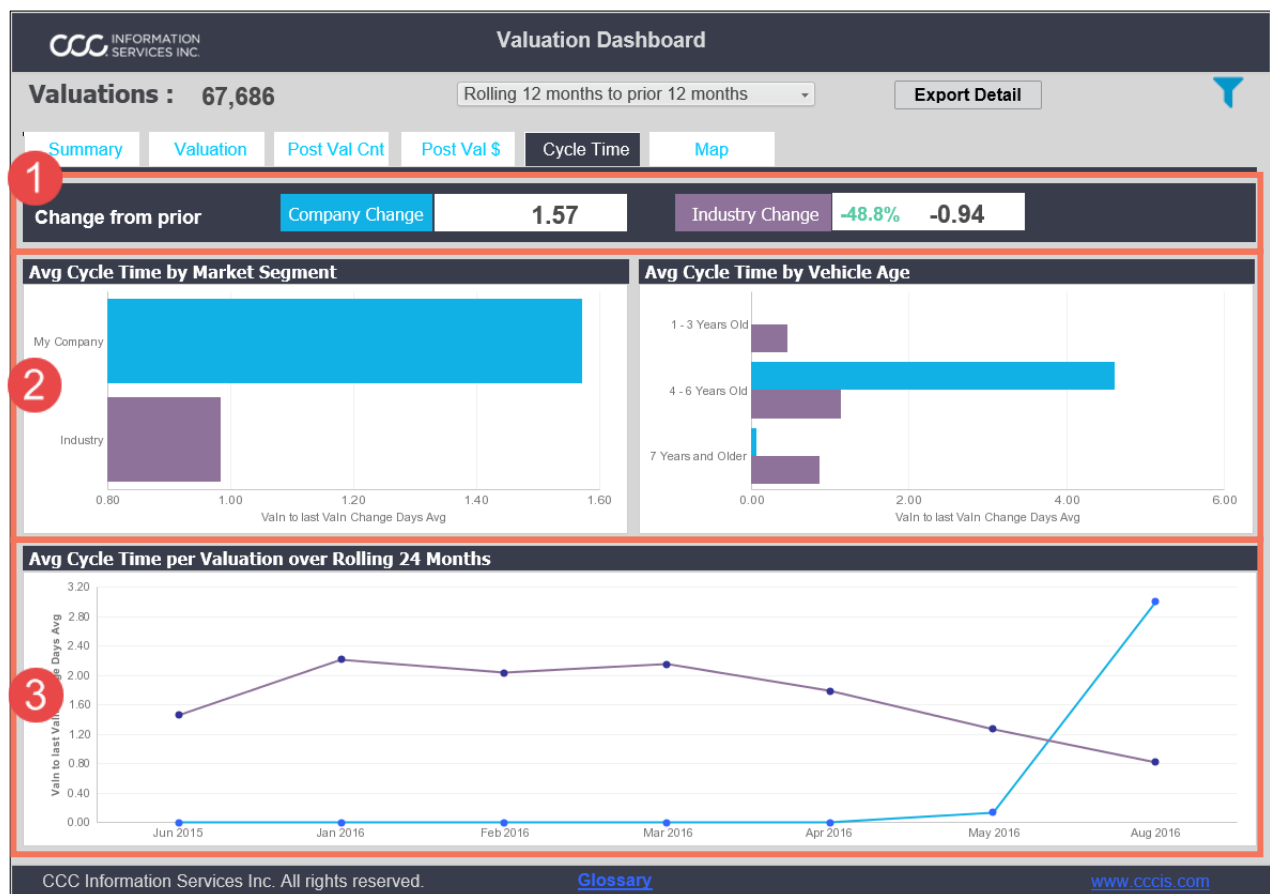
*Continued on next page*

# Valuation Dashboard - Valuation and Cycle Time Tabs

## Overview

The **Cycle Time** tab allows you to compare the average time from when the valuation was made to when the last post valuation was completed. This is a decent indication as how long your process took especially when looking back in prior months. This tab shows the following information:

Part	Description
1	Average dollar and percentage change from prior for My Company and Industry data.
2	Bar graphs show the Average Cycle Time for the Market Segment and Vehicle Age data.
3	A line graph shows the Average rolling 24 months for the Company and Industry data.



**Hint:** Hover the mouse over the bar graph items to learn more about how the values are allocated.

Continued on next page

# Valuation Dashboard – Post Val Cnt and Post Val \$ Tabs,

Continued

## Overview

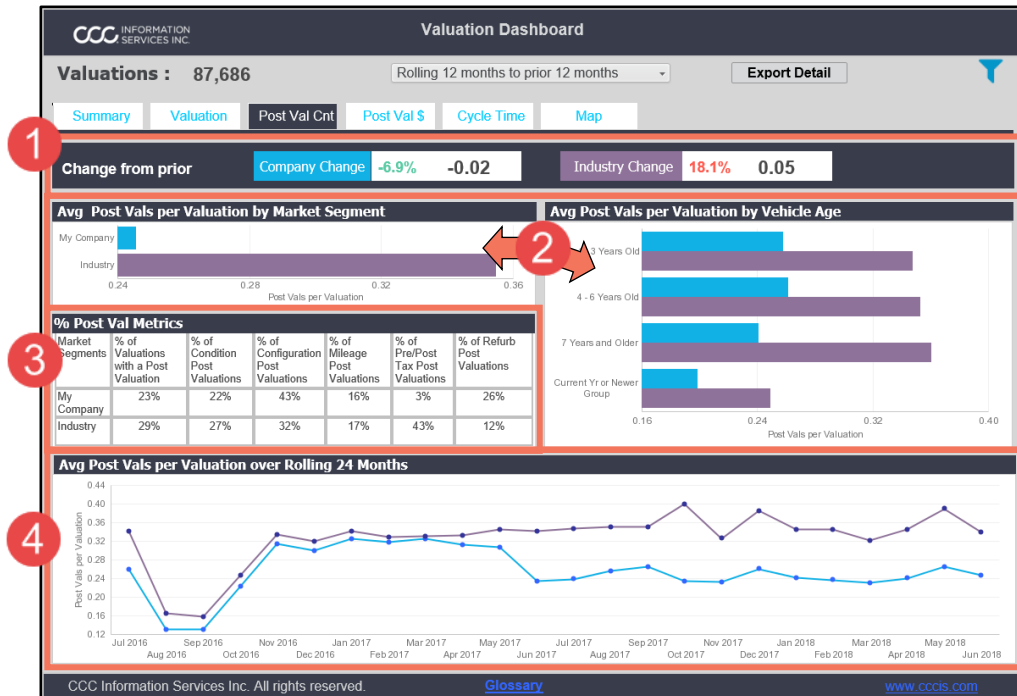
The Valuation Dashboard contains two Post Valuation tabs, **Post Val Cnt** and **Post Val \$**. Interact with the Post Valuation data through the filters and date range configurations to display graphs, percentages, and dollar figures.



## Post Val Cnt Tab

The **Post Val Cnt** tab show the following information:

Part	Description
1	Averages for the dollar and percent change from prior for My Company and Industry data.
2	A bar graph shows the Post Vals per Valuation by Market Segment and Vehicle Age.
3	Percent Post Val Metrics shows the Market Segments percentages for My Company and Industry data.
4	A line graph shows the Rolling 24 months for My Company and Industry data.

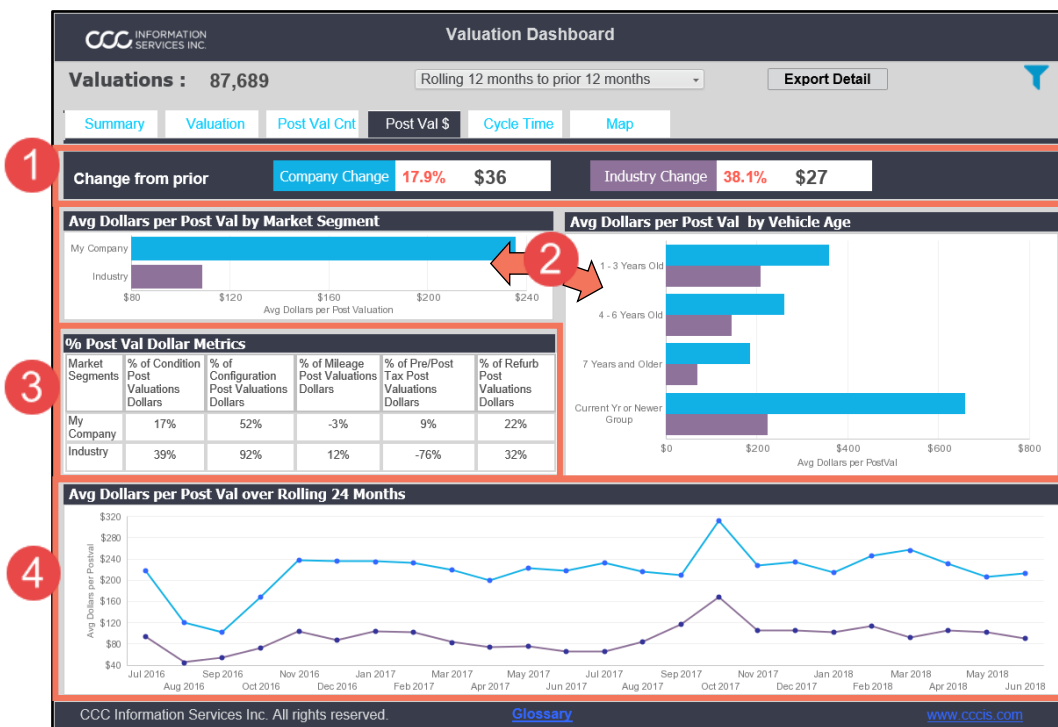


Continued on next page

# Valuation Dashboard - Post Val Cnt and Post Val \$ Tabs

**Post Val \$ Tab** The **Post Val \$** tab shows the following information:

Part	Description
1	Averages for the dollar and percent change from prior for My Company and Industry data.
2	A bar graph shows the Average Dollars per Post Valuation by Market Segment and Vehicle Age data.
3	Percent Post Val Dollar Metrics shows the Market Segments percentages for My Company and Industry data.
4	A line graph shows the Rolling 24 months for My Company and Industry data.



Continued on next page

## Valuation Dashboard – Map Tab

### Overview

The Valuation Dashboard Map tab is comprised of a color-coded map of the Valuation variances. Interact with the map's data through the filter, date range configurations, and Valuation metrics to view the variances for each State.

### Map Navigation

Use the following to change the Map settings:

#	Description
1	Select a Variance from the Map Metrics dropdown list: <ul style="list-style-type: none"> <li>Avg Final Valuation Amt</li> <li>Avg Valuation Amt Variance</li> </ul>
2	Map's color-coded legend of Valuation's dollar figure.
3	Use the filter icon to further refine your search.
4	Hover the mouse over each State to learn the variance data.

**Valuation Dashboard**

Valuations : 167,689    Rolling 12 months to prior 12 months    Export Detail

Summary    Valuation    Post Val Cnt    Post Val \$    Cycle Time    **Map**

**Map Metrics**  
Avg Valuation Amt Variance

Legend: ■ <= \$0    ■ \$1 - \$99    ■ >= \$100

Vehicle Owner State: Illinois  
Avg Valuation Amt Variance: \$301

CCC Information Services Inc. All rights reserved.    [Glossary](#)    [www.cccis.com](http://www.cccis.com)