



## CCC ONE® Touch

*version 1.x*

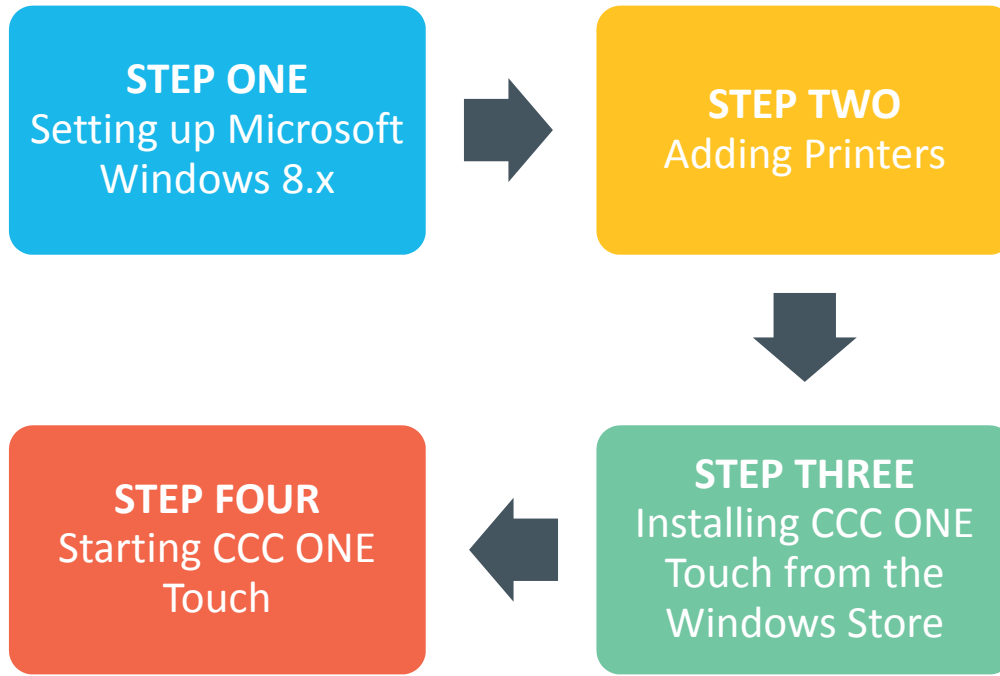
*Installation Guide*

## Table of Contents

Overview .....	3
STEP ONE: Setting up Microsoft® Windows® 8.x .....	4
STEP TWO: Adding Printers.....	9
STEP THREE: Installing CCC ONE™ Touch from the Windows® Store .....	11
STEP FOUR: Starting CCC ONE™ Touch.....	13

## Overview

Installing CCC ONE™ Touch on your tablet is a four-step process. Each step has a set of procedures that you should complete. This installation guide explains the four steps to successfully install CCC ONE Touch on your tablet.



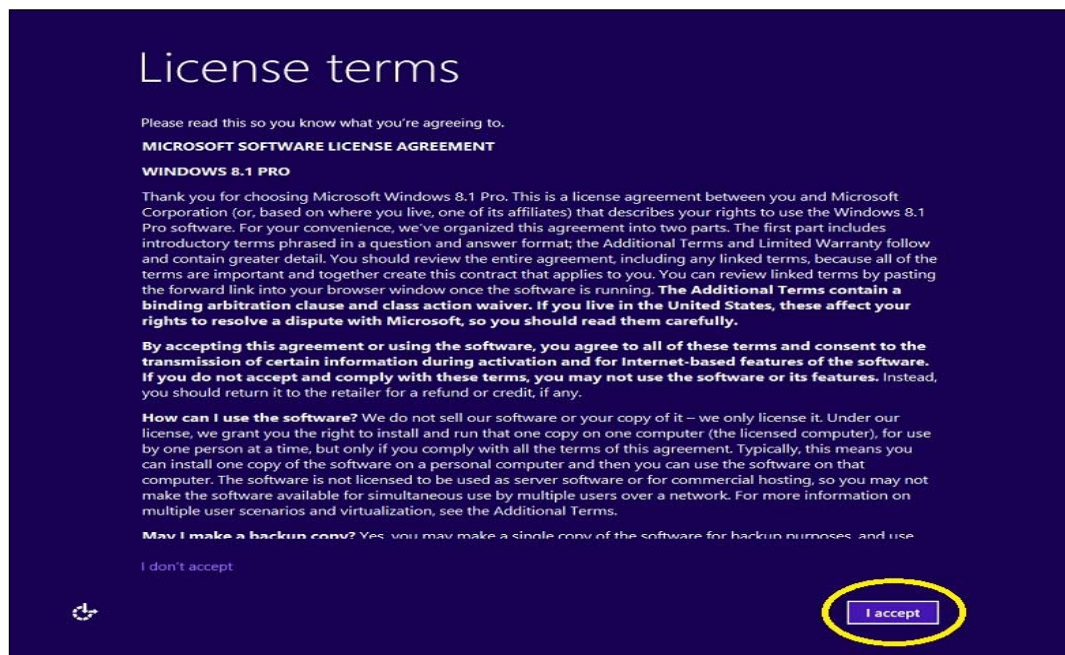
If you have any questions or need to contact CCC Technical Support, call (800) 637-8511.

## STEP ONE: Setting up Microsoft® Windows® 8.x

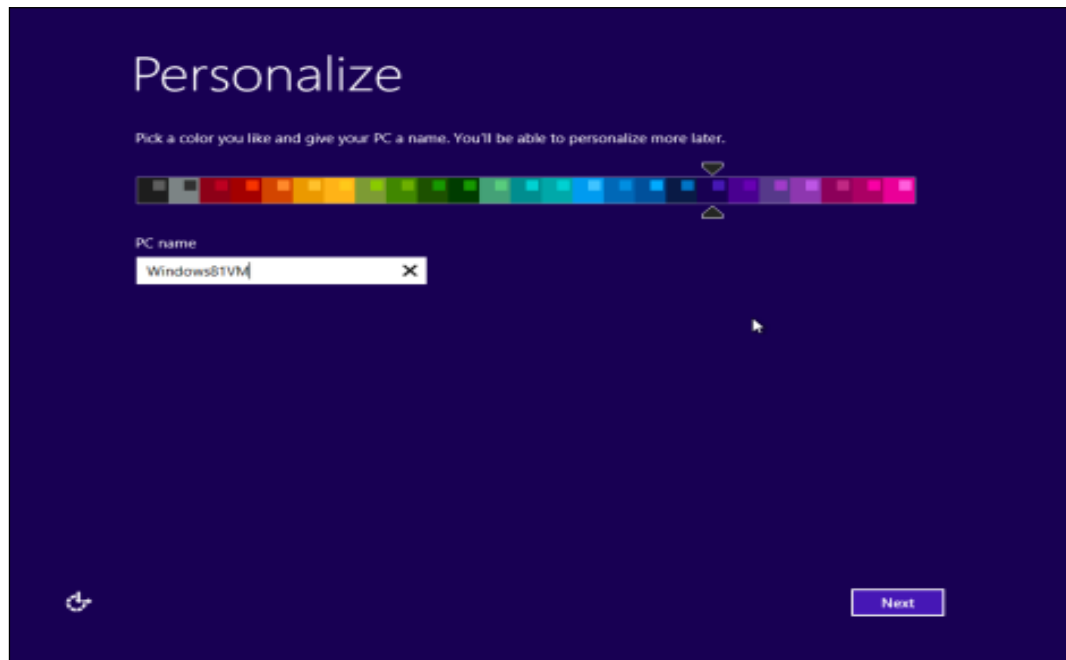
1. Unpack your tablet and inspect it for any damage. If there is damage, refer to the user guide for information on what to do.
2. Complete the initial charge of the tablet based on the manufacturer's recommendations.
3. After turning on the tablet, choose your Region and language options.



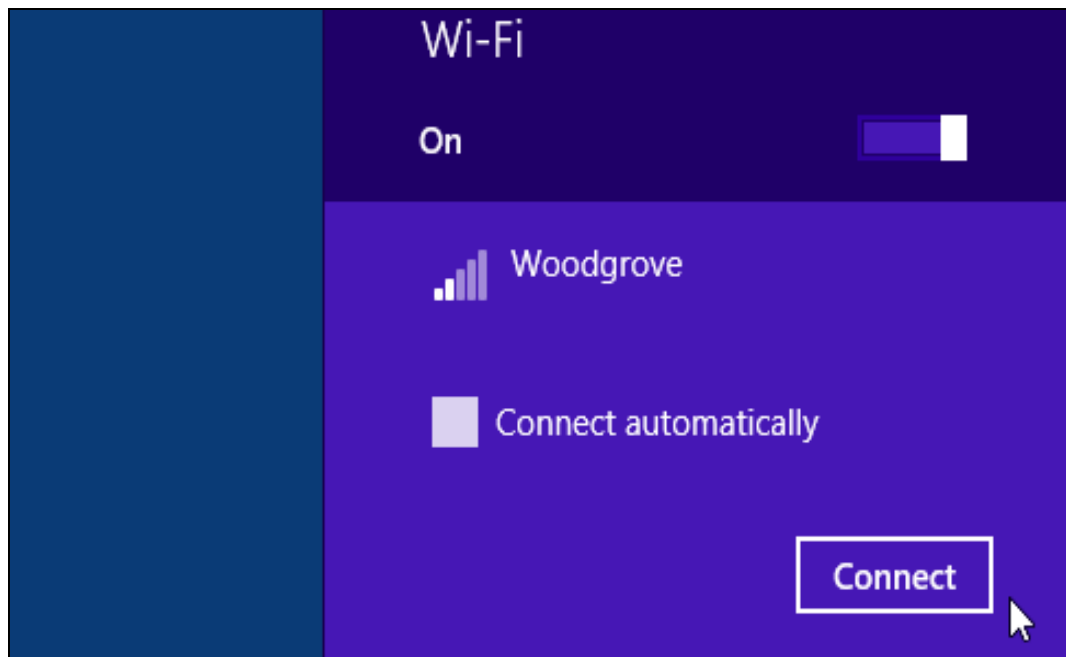
4. Accept the Microsoft Software License Agreement.



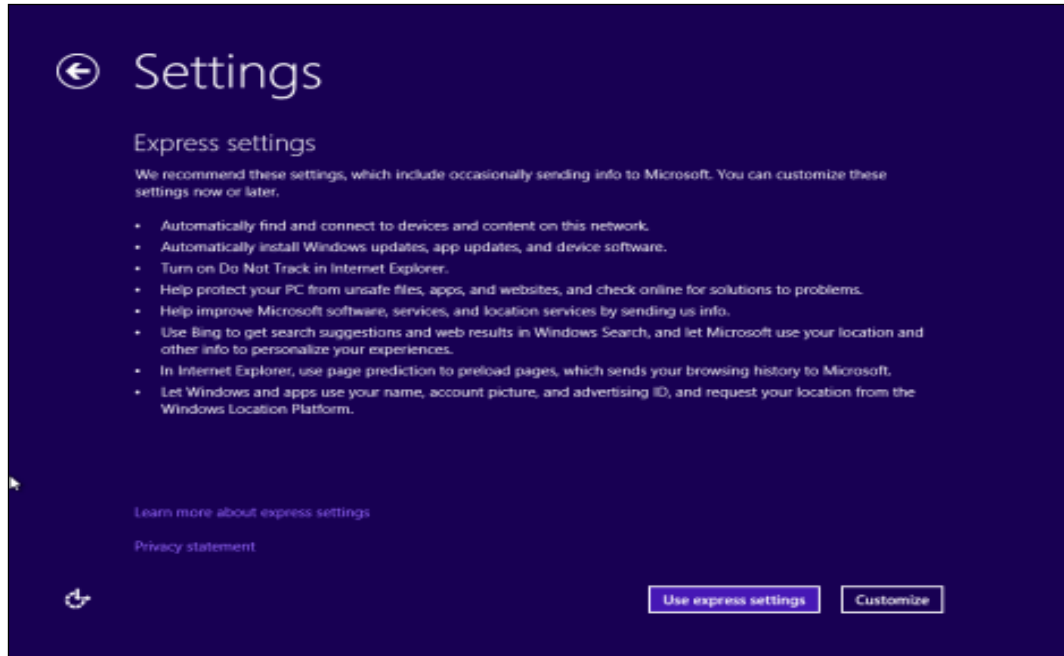
5. If prompted, select “Next” to run the Dell Update. If you prefer, you can skip this step by selecting “Skip”.
6. Personalize your tablet by selecting a theme color and entering a PC name for it.



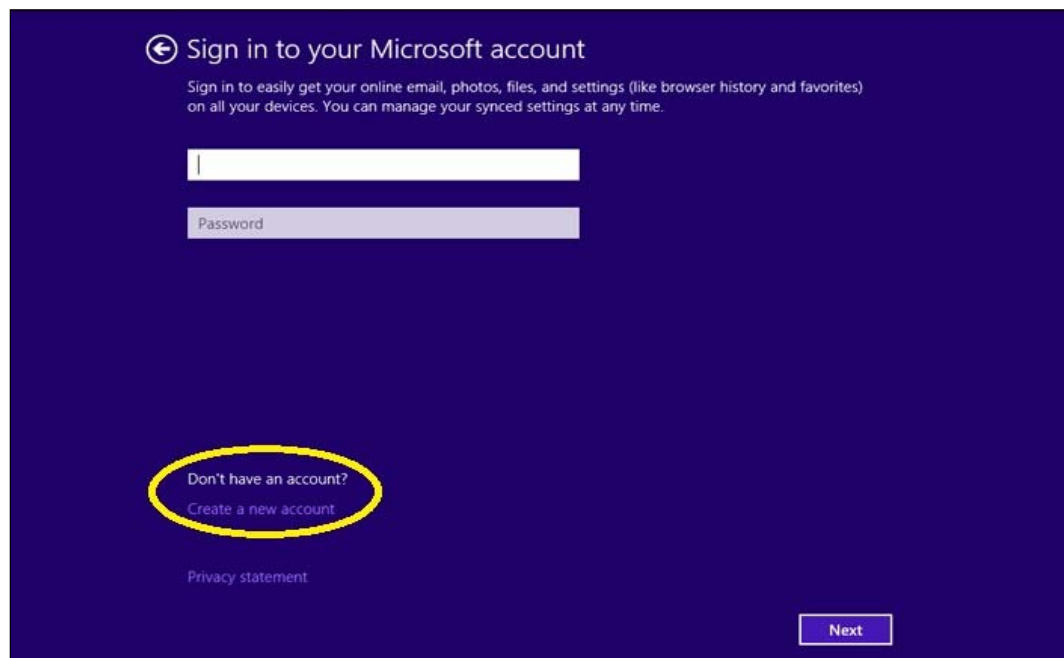
7. Select your Wi-Fi network and enter the password, if prompted. To automatically connect to this network every time you are in range, select “Connect automatically” and then select “Connect.”



8. On the Settings screen, Microsoft® Windows® 8.x recommends that you select “Use express settings.” If you need to customize any settings for your preference, select “Customize.”



9. A Microsoft account is required to download, install, and use CCC ONE™ Touch. If you do not have a Microsoft account, select “Create a new account.” Otherwise, sign in to your Microsoft account and skip to procedure 13.



10. When creating a Microsoft account, enter all the required information and select “Next.”

← Create a Microsoft account

Create a new email address. You'll be able to use it with Outlook.com, Xbox, Skype, Windows Phone, and SkyDrive, to keep all of your info together on this PC.

Email address  @ outlook.com

Or use an existing email address

New password

Reenter password

First name

Last name

Country/region

[Sign in without a Microsoft account](#)

Next

11. Enter the additional security information to help with account recovery and activation.

← Add security info

We'll only use this info to help you recover your password and keep your account more secure.

Birthdate

Gender

Country code

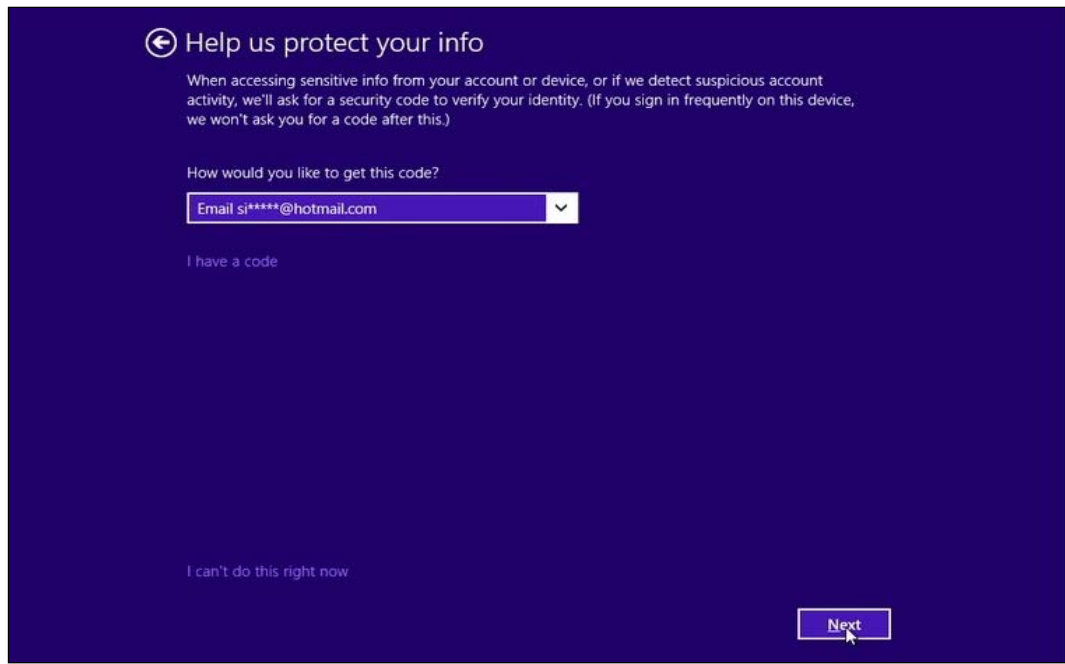
Phone number

Alternate email address

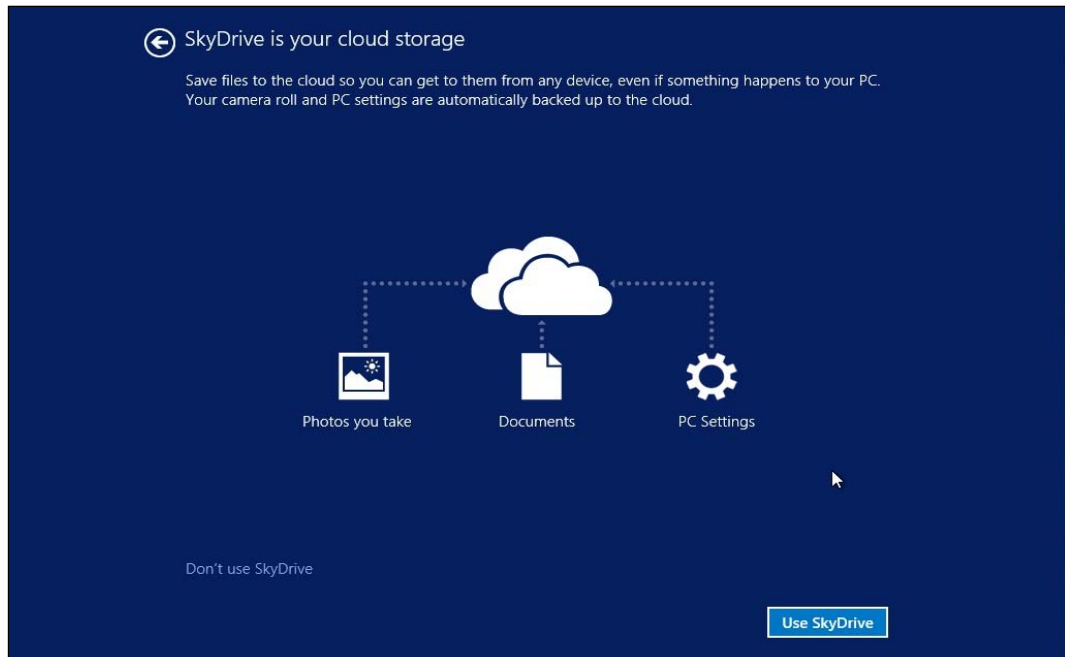
Your date of birth helps us provide you with things like age-appropriate settings. We won't display it without your permission.

Next Cancel

12. Tell Microsoft how you want to get the security code, select “Next,” and then enter the Security code sent to you.



13. SkyDrive – now called OneDrive – is an online storage system that automatically creates backups of your images and documents on Microsoft’s cloud. This service is free of charge and is optional. If you would like to use SkyDrive, select “Use SkyDrive” otherwise select “Don’t use SkyDrive.”



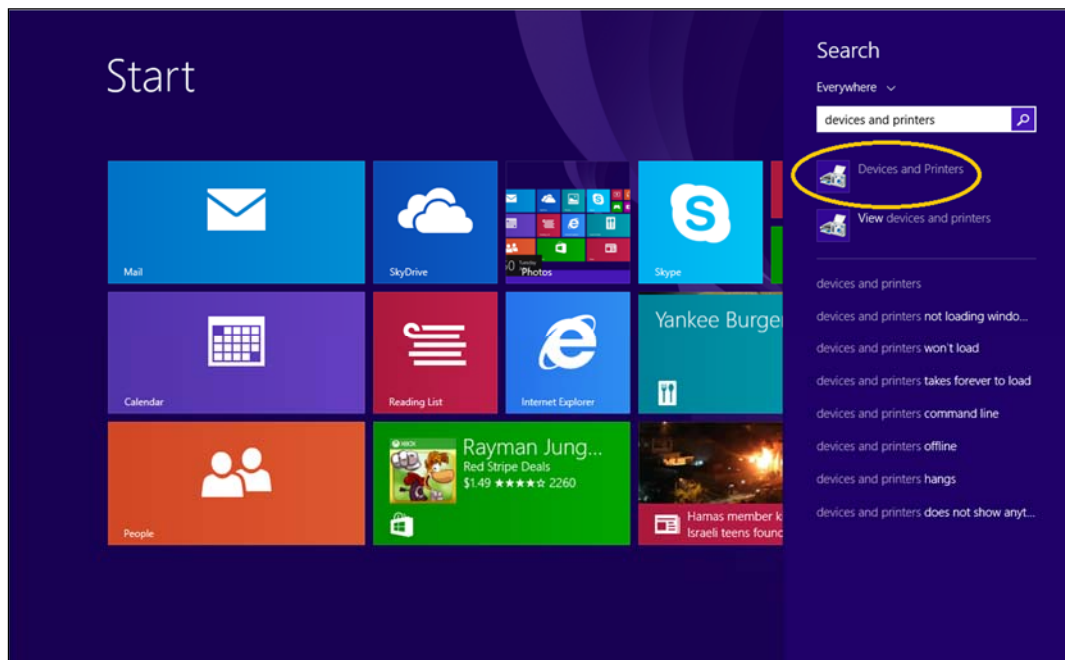


## STEP TWO: Adding Printers

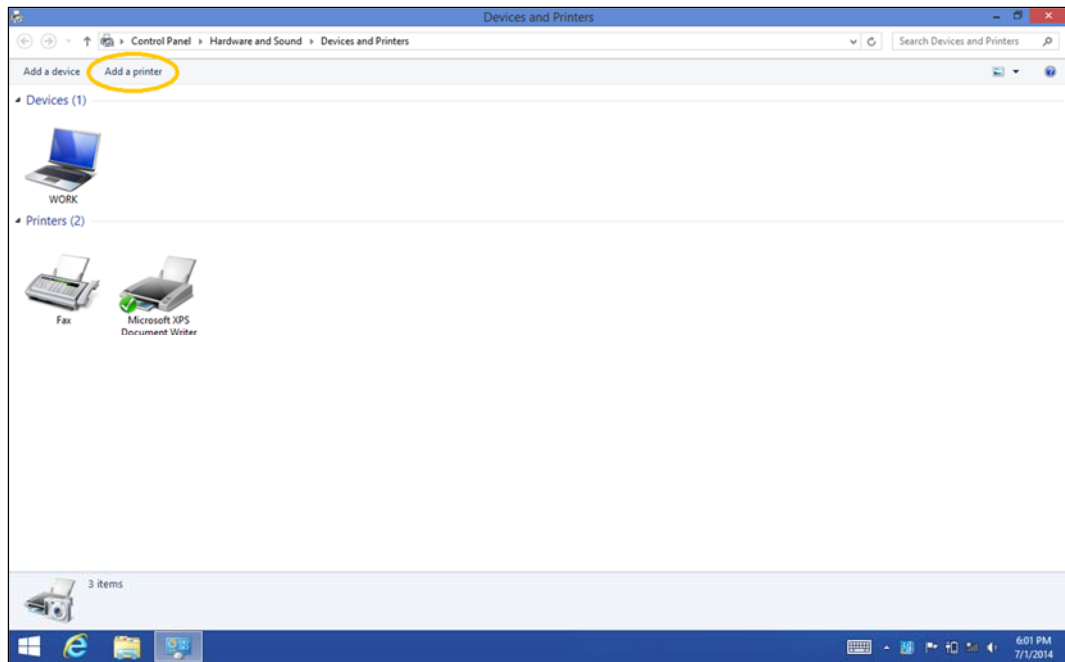
1. To add a printer to your tablet, swipe the Start menu from right to left. Then, tap on the magnifying glass icon labeled “Search.”



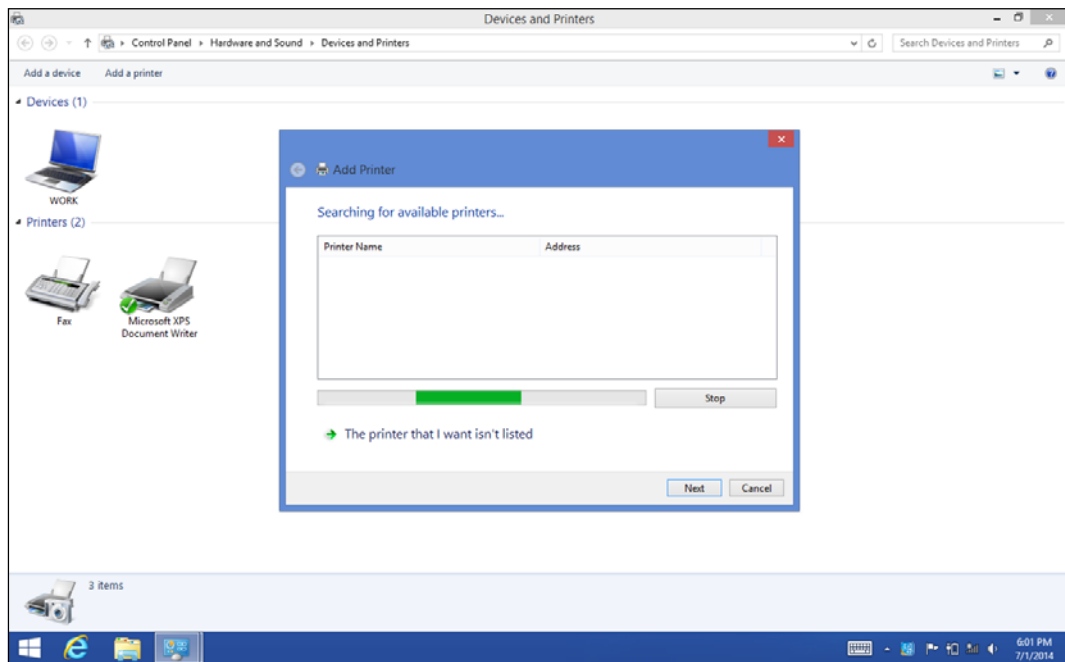
2. Type “devices and printers” in the Search field and tap on the search result labeled “Devices and Printers.”



3. Tap “Add a printer” at the top-left of the screen.



4. When the tablet searches for and displays all the available printers, select your printer by tapping it and then selecting “Next.”

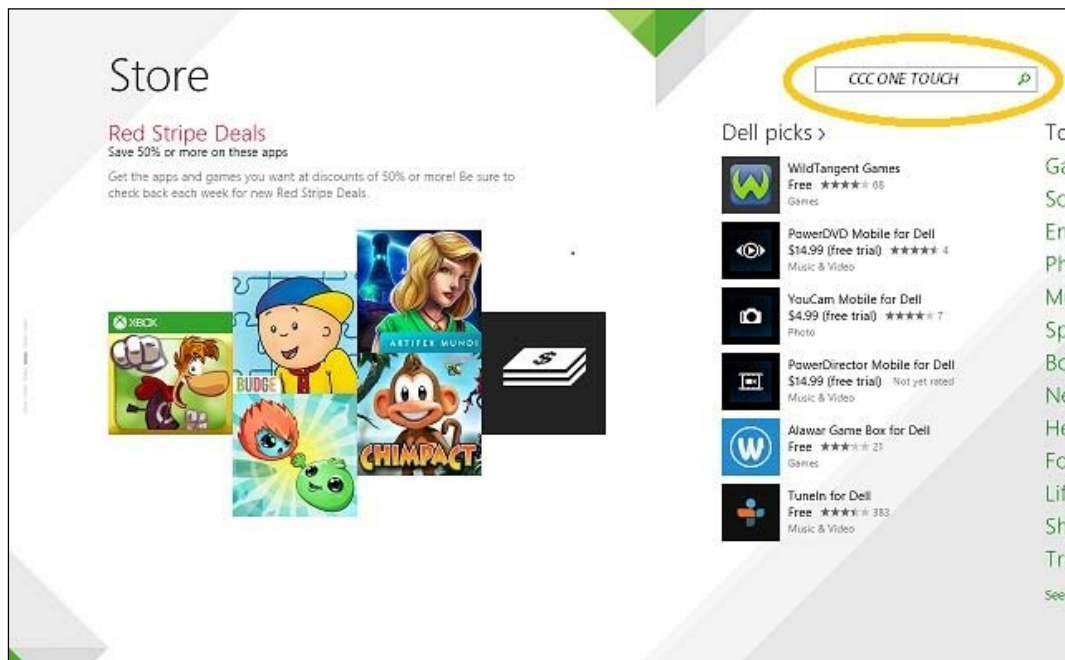


## STEP THREE: Installing CCC ONE™ Touch from the Windows® Store

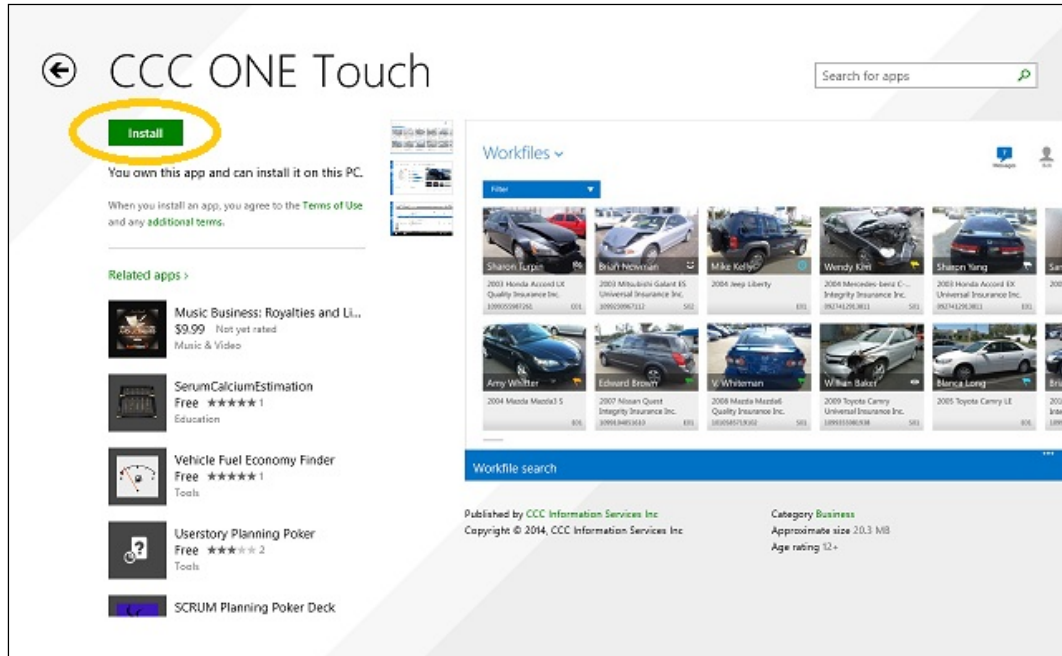
1. Tap on the Start menu icon located at the bottom left corner of the screen to get back to the Windows Start menu.
2. Tap the green square with the white shopping bag icon. It may be labeled “Store.”



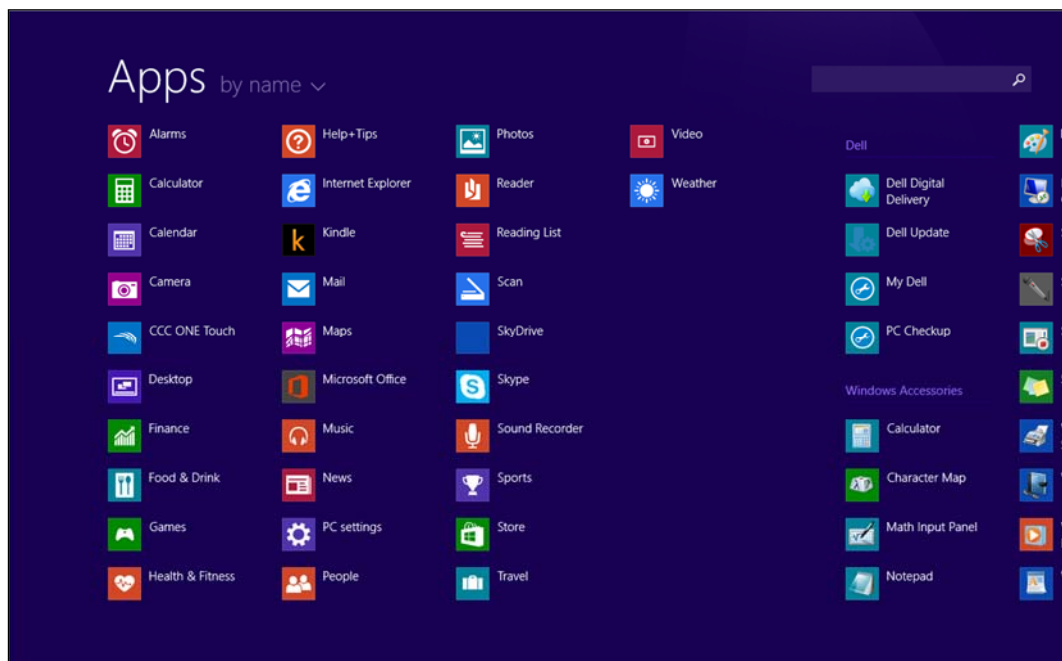
3. Enter “CCC ONE Touch” in the search field at the top right of the screen.



4. Select “Install” at the top left. “Installing CCC ONE Touch...” will display at the top right of the screen.



5. After installing the app, locate CCC ONE™ Touch in the App Menu by tapping on the down arrow, or by swiping up from the bottom of the screen. Touch and hold the CCC ONE Touch icon and choose “Pin to Start” to add CCC ONE Touch to your default Start menu.



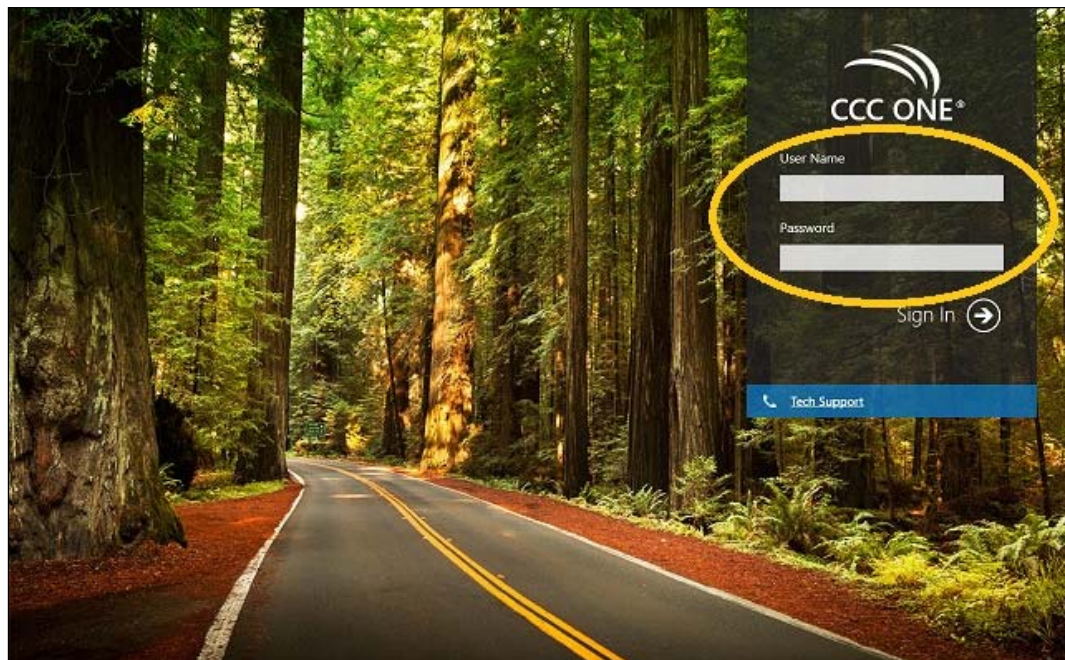


## STEP FOUR: Starting CCC ONE™ Touch

1. Tap the icon to open CCC ONE Touch.



2. On the CCC ONE Touch sign in screen, enter your CCC ONE User Name and Password. This is the same User Name and Password you use on the desktop version of CCC ONE. Select "Sign In."



3. Create a 4-digit PIN to protect your account.



4. Your installation and setup is complete. You are ready to write estimates with CCC ONE™ Touch.

