

Online Photo Estimate Queue

Introduction

Shops that have the CCOPE feature code will have access to a new client feature deployment called “Enable Photo Estimate Centralized Queue”. This client feature deployment allows Photo Estimates for multiple locations to be viewed in a centralized area.

For additional information on Photo Estimate, click [here](#).

Permissions and Requirements

Once the MSO queue is enabled, Photo Estimates are routed to the new Photo Estimate view and not the Calendar Customer Visits view.

The security role permission, which is available after the client feature

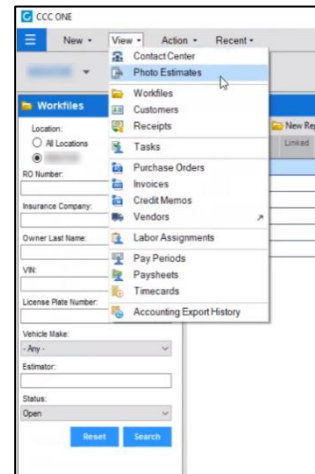
Requirements	
Feature Code	CCOPE on their license, activated on the server
Client Feature Deployment	Enable Photo Estimate Centralized Queue
Security Role	Photo Estimate – View, write, and send photo estimate from Photo Estimate view

deployment is enabled on the server, is Photo Estimate.

Online Photo Estimate Queue

The online photo estimate queue compiles workfiles received through Photo Estimate in a quick and concise place.

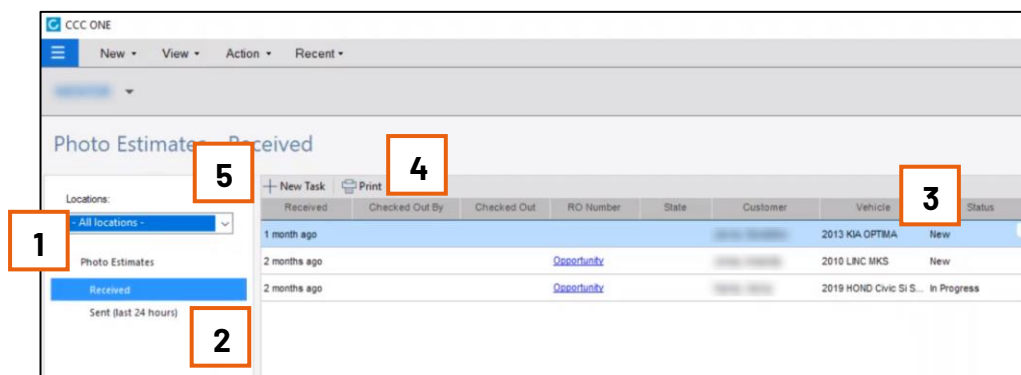
To navigate to the Online Photo Estimate Queue, select **View** and click on **Photo Estimate**.



Continued on next page

Online Photo Estimate Queue, Continued

Online Photo Estimate Queue, continued



1	Allows users to see all locations which they have been granted access as well as photo estimates that have come in for that location.	
2	Allows users to open the drop list:	
	Status	Description
	Received	For new or in progress photo estimate
	Sent (last 24 hours)	For completed photo estimates that were sent to the customer in the last 24 hours
3	Displays statuses vary depending on the workfile:	
	Status	Description
	New (never opened)	Workfile has been received but has not been saved. User can open, view, set priority, or delete.
	New (opened)	Workfile has been received, opened, and saved. This can no longer be deleted. You can view and set priority.
	In Progress	One or more estimate lines have been added. User has the ability to cancel or send the estimate to the customer.
4	Allows users to print the list of workfiles within the view.	
5	Allows users to add new tasks to any workfiles.	