

CCC ONE[®] Estimating

Installation Guide



Table of Contents

Before You Begin..... 3

Plan Your Install 4

Start the Install 6

Launch the CCC ONE Install Wizard..... 7

Log into CCC ONE 13



Before You Begin

Before You Begin

This document describes the steps necessary to install CCC ONE® Estimating.

Open the CCC ONE package and remove the CCC ONE USB Flash Drive



CCC ONE USB Flash Drive

Estimated time to complete CCC ONE installation: **55 minutes.**

(Installation may vary depending on the hardware and number of users.)

Plan Your Install

Planning Your Install

Complete the following task before starting the installation for optimal performance.

Estimated time: **5 minutes**

| Step | Action |
|------|--|
| 1 | <p>Verify that you have a local account with administrator permissions.</p> <p>Make sure your primary computer is always turned on, connected to the Internet, and not set to go into hibernation mode.</p> <p>CCC ONE® Update Manager requires this to keep your software up to date by automatically downloading data and program updates over the Internet.</p> |
| 2 | <p>Complete these steps on all computers on which CCC ONE will be installed.</p> |

Continued on next page

Plan your install, Continued

Planning Your Install, continued

| Step | Action |
|------|---|
| 3 | <p>To successfully install CCC ONE, you will need a Windows® local administrator username and password.</p> <p>If you do not have this information, contact your Computer Systems Administrator.</p> <p>If your Windows® local administrator account is not configured with a password, you can:</p> <ol style="list-style-type: none"> a. Create a separate Windows® local administrator account containing a password b. Add a password to your existing Windows® local administrator account <p>It is recommended to specify a local administrator account for which the password does not expire.</p> <p>To update user account settings or create new accounts, navigate to:</p> <ul style="list-style-type: none"> • <i>Windows 8, 8.1</i> - Start > Apps > PC Settings > Accounts • <i>Windows 10</i> - Start > Settings > Accounts |

Start the Install

Starting the Install

Insert the CCC ONE USB Flash Drive into an open USB port.

The CCC ONE Welcome screen will open.

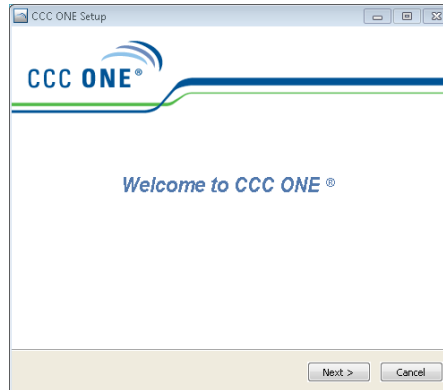
Estimated time: **1 minute**



Launch the CCC ONE Install Wizard

Launching the CCC ONE Install Wizard

From the Welcome to CCC ONE® screen, follow the prompts and answer the questions throughout the installation program to install CCC ONE Update Manager and CCC ONE Program, Data, and Graphics.

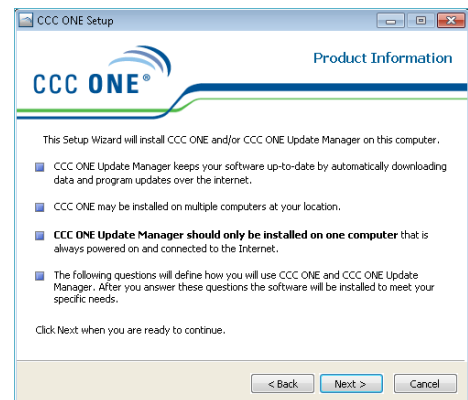


Estimated time: **20 minutes**

(Times may vary depending on computer hardware and Internet connection.)

1. The Product Information screen lists important reminders about installing CCC ONE.

Carefully read the information and click Next when you are ready to continue.

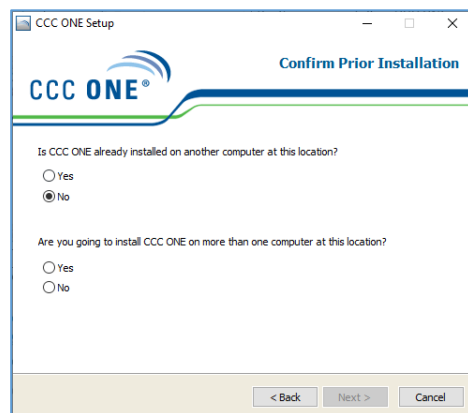


2. If you are installing CCC ONE on your primary computer, click No for the first question.

Click No to the second question if it's a single computer installation.

Click Yes to install CCC ONE on other network computers.

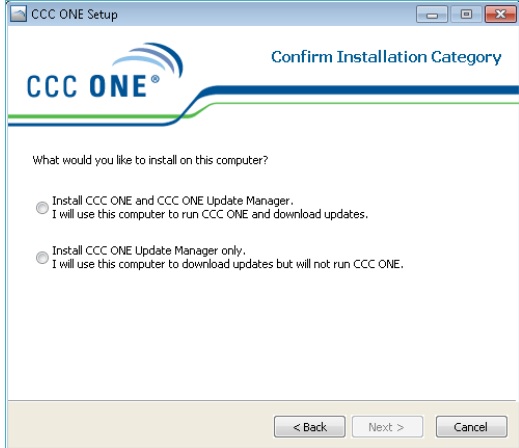
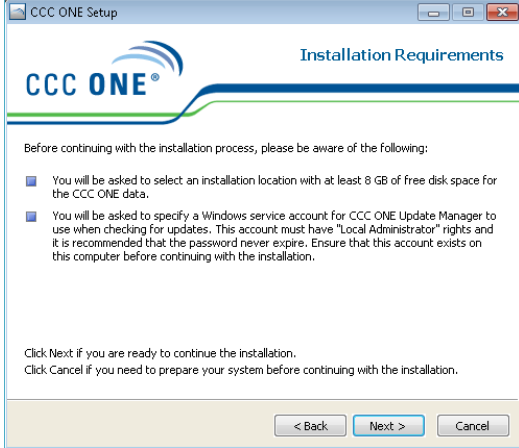
Click Next.



Continued on next page

Launch the CCC ONE Install Wizard, Continued

Launching the CCC ONE Install Wizard, continued

| | |
|---|---|
| <p>3. Use the Confirm Installation Category screen to specify how the Setup Wizard will install CCC ONE on this computer.</p> <p>Typically, both CCC ONE and CCC ONE Update Manager are installed on a single computer installation.</p> <p>However, if you are going to use this computer to download updates only, just install CCC ONE Update Manager. Click Next.</p> |  |
| <p>4. Read the requirements listed on this screen. If you need to prepare your computer before continuing with the installation, click Cancel.</p> <p>Otherwise, click Next.</p> |  |

Continued on next page

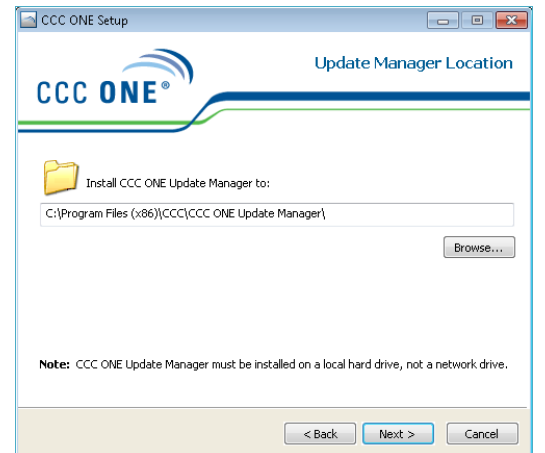
Launch the CCC ONE Install Wizard, Continued

Launching the CCC ONE Install Wizard, continued

- The Update Manager Location screen lets you choose a folder on your computer's local hard drive where CCC ONE Update Manager will be installed.

NOTE: CCC ONE Update Manager must be installed on only one computer at your location.

Click Next.

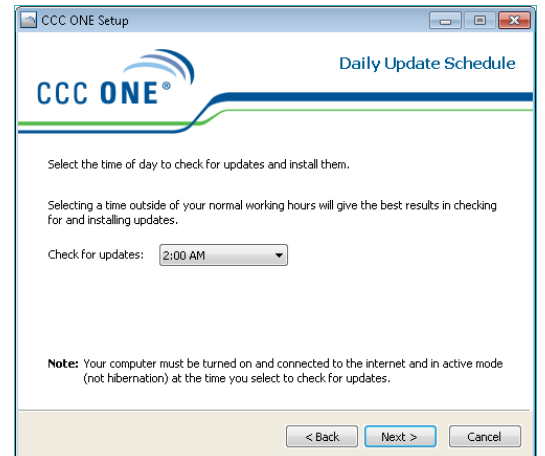


- Select the time of day to check for updates and install them using the Daily Update Schedule screen.

Select a time outside of your normal working hours for best results, and then click Next.

NOTE: Your computer must be turned on, connected to the Internet, and set not to go into Hibernation mode for the Daily Update to work.

You do not need to be logged into CCC ONE Estimating for CCC ONE Update Manager to properly download and install updates.



Continued on next page

Launch the CCC ONE Install Wizard, Continued

Launching the CCC ONE Install Wizard, continued

7. CCC ONE Update Manager requires a password protected Windows® administrator local account to complete installation.

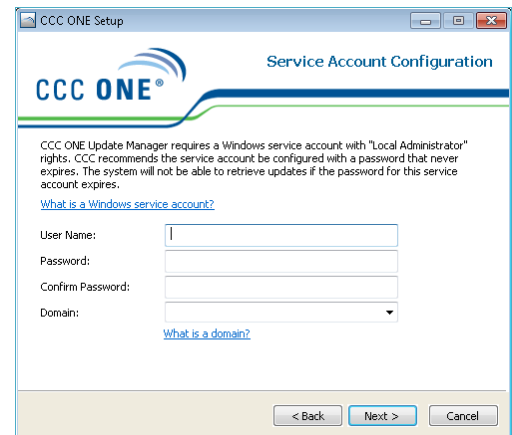
Refer to the section **Planning Your Install** on page 5 in this document for local administrator account requirements.

In order to download and install updates, CCC ONE Update Manager must be configured with the latest password for the Windows local administrator account specified.

It is recommended to specify a local administrator account for which the password does not expire.
Click Next.

To update user account settings:

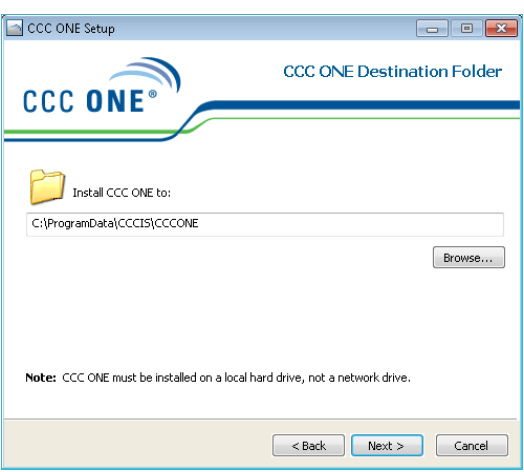
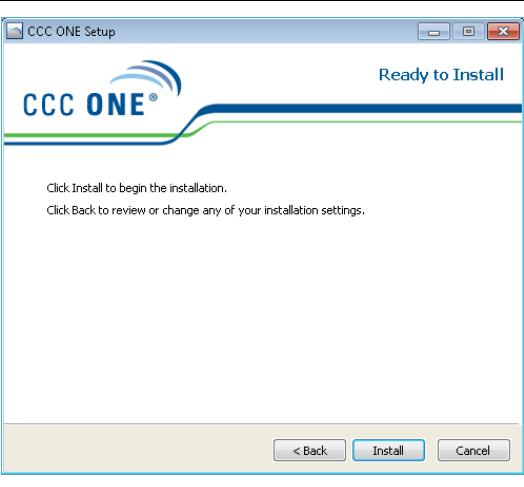
- *For Windows 8, 8.1* - Start > Apps > PC Settings > Accounts
- *Windows 10* - Start > Settings > Accounts



Continued on next page

Launch the CCC ONE Install Wizard, Continued

Launching the CCC ONE Install Wizard, continued

| | |
|--|---|
| <p>8. The CCC ONE program will be installed to the CCC ONE Destination Folder. Click Next.</p> <p>NOTE: The CCC ONE program must be installed on a local hard drive, not a network drive.</p> |  |
| <p>9. Click Install on the Ready to Install screen to begin the installation.</p> |  |

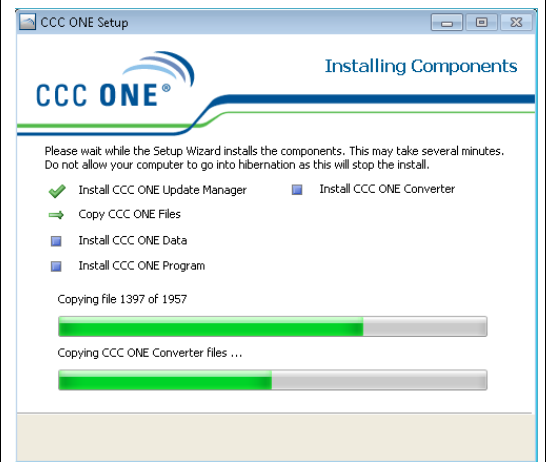
Continued on next page

Launch the CCC ONE Install Wizard, Continued

Launching the CCC ONE Install Wizard, continued

10. As the Setup Wizard installs the various components of CCC ONE, the Installing Components screen displays the progress of the installation process.

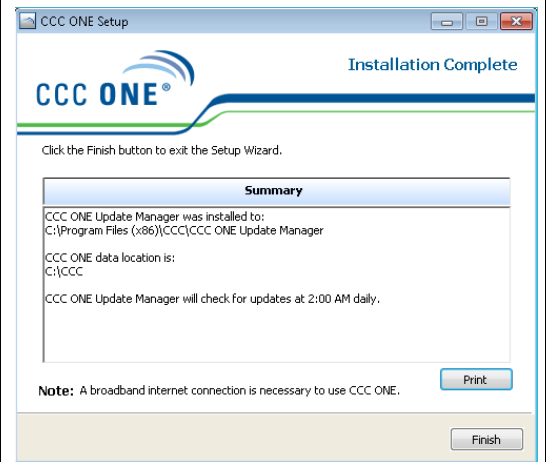
NOTE: Do not allow your computer to go into Hibernation mode as this will stop the installation process.



11. The Installation Complete screen displays a Summary of the instructions for installing CCC ONE on other network computers.

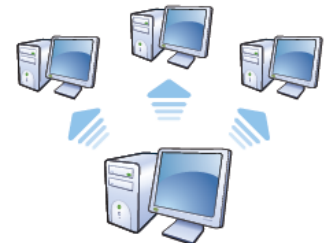
NOTE: Click the Print button to print a Summary of this installation to assist you when installing CCC ONE on other network computers.

Click Finish.



Installing CCC ONE on Other Network Computers

This step is only necessary if you are installing CCC ONE on other computers on the same network. Use the installation Summary that you printed after installing CCC ONE on your primary computer as a guide for your next installation.



Log into CCC ONE

Logging into CCC ONE

Open CCC ONE by double-clicking the icon on your Microsoft® Windows® desktop. The CCC ONE Welcome screen opens.

NOTE: A CCC Representative will provide this information in order to proceed with setup and configuration.

Remove and Store Your USB Flash Drive

Once complete, remove your CCC ONE USB Flash Drive and store it safely.

STOP IMPORTANT! About once a month, check the computer where you have installed CCC ONE Update Manager for any messages on the screen.

After downloading and installing certain updates, CCC ONE Update Manager may ask you to restart the computer. You will need to restart your computer for CCC ONE to work properly.

If you need help

Contact CCC Technical Support at 800-637-8511

A CCC Representative will assist with remaining setup/configuration and product training.